



# Macleod P - 12 College

Newsletter Issue 17, 11<sup>th</sup> November 2016

**MONDAY 5<sup>th</sup> DECEMBER**  
**2017 STAFF PLANNING DAY**  
**PUPIL FREE - OSHC AVAILABLE**



**2017 College Captains & Deputies**



**2017 Music Captains & Deputies**

College Principal: Mario Panaccio      College Council President: Nicholas Abbey  
Assistant Principals: Georgina Convery, Michelle Wallis  
College Captains: Rayanne Margi, Jasmin Voykovic (Secondary)  
                         Alexandra Saveski, Keelan Russell (Primary)  
MACLEOD COLLEGE CARWARP STREET MACLEOD 3085      TELEPHONE 9459 0222      FACSIMILE 9458 1878  
macleod.co@edumail.vic.gov.au      www.macleod.vic.edu.au

## CALENDAR

### NOVEMBER

**Monday 14<sup>th</sup> - Friday 18<sup>th</sup>**  
**Year 10 Revision**  
**Year 11 Exams**

**Tuesday 15<sup>th</sup>**  
**2017 Information Night**  
**6pm Prep - Year 6**  
**7pm Year 7**

**Wednesday 16<sup>th</sup>**  
**6.15pm College Council**

**Friday 18<sup>th</sup>**  
**6pm PaFM Movie Night**  
**Year 12 Valedictory Dinner**

**Mon 21<sup>st</sup> - Fri 25<sup>th</sup>**  
**Year 10 Exams**  
**2017 Year 12 Orientation**

**Monday 21<sup>st</sup> November -**  
**Tuesday 20<sup>th</sup> December**  
**GERMAN TOUR**

**Tuesday 22<sup>nd</sup>**  
**7pm Information Evening**  
**2018 Enrolments**

**Friday 25<sup>th</sup>**  
**Last Day Year 11**

**Mon 28<sup>th</sup> Nov - Fri 2<sup>nd</sup> Dec**  
**2017 Year 11 Orientation**

### DECEMBER

**Friday 2<sup>nd</sup>**  
**Last Day Year 10**  
**7.30pm Twilight Concert**

**Monday 5<sup>th</sup>**  
**2017 Planning Day -**  
**Pupil Free**

**Tuesday 6<sup>th</sup> - Wednesday 7<sup>th</sup>**  
**2017 Year 7 Orientation Days**

**Tuesday 6<sup>th</sup> - Friday 16<sup>th</sup>**  
**Year 7 - 9 Students begin**  
**2017 Classes - COMPULSORY**  
**ATTENDANCE BY ALL**  
**STUDENTS**

**Monday 12<sup>th</sup>**  
**Year 6 Celebration Evening**

**Tuesday 13<sup>th</sup>**  
**Year 12 Graduation & Awards**  
**Night**

**Tuesday 20<sup>th</sup>**  
**11am Finish**  
**End of Term 4, 2016**

## Principal's Report

### Leadership Inauguration

The inauguration of the new leadership team took place on Wednesday 2<sup>nd</sup> November. It was great to see all the leadership students and their families celebrating.



**Ramsay House Captains & Primary Leader**



**Scarff House Captains & Primary Leader**



**Shepherd House Captains & Primary Leader**



**Carter House Captains & Primary Leader**

## Year 7 - 9 Start of 2017 Program

Year 7 - 9 students will begin lessons for their 2017 program on Tuesday 6<sup>th</sup> December and this program will continue until Friday 16<sup>th</sup> December. **This is an important part of the students' curriculum learning for 2017 and IS COMPULSORY FOR ALL YEAR 7 - 9 STUDENTS TO ATTEND.**

### Role of Chaplaincy at Macleod College

The College Council is currently reviewing its delivery of our wellbeing services and in particular the role of chaplaincy at Macleod. We would like input from students, parents, staff and community members and have organized a short survey on the school webpage. Please take the time to complete the survey, as your input for future planning is important to us.

**The survey link can be found on the College website and will be closed at 9am on Monday 21<sup>st</sup> November.**

## Mario Panaccio Principal

### Wellbeing

#### Poetry – 'Mental Illness'

When you're trapped in a cage inside your own mind,  
Looking or thinking about yourself is a task put behind,  
The fear of being judged, embarrassed or bullied,  
Even when no one is the real bully.

The task to impress is a task put on top,  
And without any help there is no way to stop,  
It's not just impressing others, it's impressing yourself,  
And thinking; 'I can and I have to do this myself.'

When your mind's got you against the wall,  
The days where it pushes and shoves you until you fall,  
It's a little monster in your mind,  
Telling you not to leave it behind.

With **a little help** you can get through,  
By being strong and by just being you.

#### Ella Russell, 9B – Term 3 Reflective Journal

Understanding that it is okay to ask for help is a big step. Please make contact with the Macleod College Wellbeing Team through the general office or go to Headspace.org for advice on how you can help yourself or support a friend or family member who may be having a tough time.

**Royce Light - Wellbeing**

### Community

#### Need RSA servers for your next school event? Responsible Service of Alcohol (RSA)

Gain skills & knowledge required to responsibly sell or serve alcohol and satisfy the requirements for responsible sale and service of alcohol under Vic. Commission for Gambling and Liquor Regulation (VCGLR).

1 session : Friday, 18th November 2016, 9:30am – 1:30pm at Merrilands Community Centre, Reservoir  
Cost: \$55; Manual: \$10

**For more details please ring PRACE on 9462 6077 or visit our website: [www.prace.vic.edu.au](http://www.prace.vic.edu.au)**



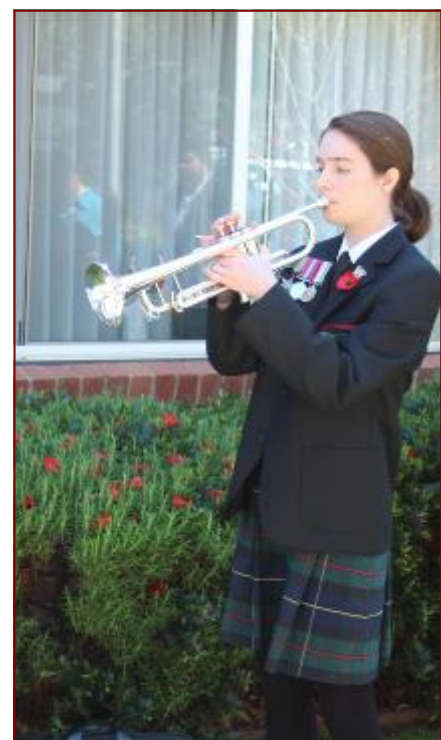
### Remembrance Day - Macleod College

Remembrance Day was commemorated with a reading and a minute's silence. Some students were in the Macleod College ANZAC Garden for this short service.



### Remembrance Day - Vasey House

Principal Mario Panaccio and students represented Macleod College at the Vasey House Service. College Captains Rayanne Margi and Jasmin Voykovic read a poem, students laid poppies and Makaela Egan played the 'Last Post' and 'Rouse'.





## Careers

### YEAR 12 AND VTAC –

Late **course applications** can still be made, but now cost \$130 (till 2 Dec). The payment **deadline** for most applicants is **19 December**.



Course **preference changes** can be made till 12 noon 20 December, except for the period 8 – 21 November; they can also be made **between Offer Rounds** in January and February

The **first Offer Round** of courses will be on 18 January, the second on 7 February. There will be three later rounds of offers as well

You are advised to **accept your first offer of a tertiary place**. Most applicants will only receive one offer. **Accepting an offer does not stop you from receiving a later offer** for a course higher in your preference list.

**WHERE CAN I GET ASSISTANCE DURING ‘CHANGE OF PREFERENCE’ WEEK?** The week after you receive your ATAR is generally known as **Change of Preference (COP) week** (Mon 12 – noon on Tues 20 December). During this time tertiary institutions run **information sessions, COP Expos, offer phone assistance**, and will help you in any way they can. You can also obtain **assistance at school**. These institutions are offering the following (check online for more details):

- **Australian Catholic University – Hotline:** 1300 ASK ACU (1300 275 228); **COP event** on Tuesday 13<sup>th</sup> December.
- **Box Hill Institute – Hotline:** 1300 BOX HILL (1300 269 445); 5-7pm, **COP Night** 14 December (all campuses) (cont.)
- **Charles Sturt (NSW) – Hotline:** 1800 334 733
- **Chisholm – Hotline:** 1300 244 746
- **Deakin – Hotline:** 1300 DEGREE (1300 334 733); **Chat online with staff and ask questions:** <http://choose.deakin.edu.au/>; **Information Evenings:** 4-7pm, 15 December, Level 2, Building BC, **Burwood Campus**; 4-7pm, 16 December, 1 Gheringhap St, **Geelong Waterfront Campus**; **Register:** <http://choose.deakin.edu.au/>
- **Federation - Hotline:** 1800 333 864
- **Holmesglen – Hotline:** 1300 693 888
- **Kangan – Hotline:** 13 8233
- **La Trobe – Hotline:** 1300 135 045; **Advisory Day:** Tues 13 December (Bundoora 10am-2pm), (Bendigo 11am-2pm).
- **Melbourne Polytechnic – Hotline:** 9269 1200
- **Monash – COP Expo:** 3-7pm, Wed 14 December, Building H, Caulfield campus, 900 Dandenong Rd, Caulfield East; **COP Hotline:** 1800 MONASH (1800 666 274); **see** [www.study.monash](http://www.study.monash)
- **RMIT – Hotline:** 9925 2260; **Visit Info Corner**, 330 Swanston St, Melbourne (Cnr. La Trobe St); **COP Expos:** Arts, Design, Communication, Justice, International and Community Services courses 11am-1pm, 14 Dec; Business courses 3-5pm, 14 Dec; Science, Engineering and Health courses 11am-1pm, 15 December; <http://inspired.rmit.edu.au>
- **Swinburne – Hotline:** 1300 275 794; **COP Expo:** 11am-4pm, 14 Dec (Hawthorn campus); **See:** [www.swinburne.edu.au/choose](http://www.swinburne.edu.au/choose).
- **University of Melbourne – Hotline:** 13 MELB (13 6352), email [13MELB@unimelb.edu.au](mailto:13MELB@unimelb.edu.au)

- **Victoria – Hotline:** 1300 VIC UNI (1300 842 864); **Book an appointment:** [www.vu.edu.au/change](http://www.vu.edu.au/change); **COP Expo:** 3.30-6.30pm, 14 December (Footscray Park)
- **William Angliss – Hotline:** 1300 ANGLISS (1300 264 547)

### UNIVERSITY OF MELBOURNE NEWS –

#### TRANSPARENCY OF OFFERS AND ATAR's

Students wishing to learn more about the **distribution of ATAR's** in the previous January offer round can check out details.

**See:** [www.futurestudents.unimelb.edu.au/admissions/entry-requirements/summary-of-undergraduate-offers](http://www.futurestudents.unimelb.edu.au/admissions/entry-requirements/summary-of-undergraduate-offers).

### NEW SCIENCE MAJORS IN 2017 – 41 areas of

**specialisation** are now available in the B. Science with the addition of **Data Science** and **Environmental Engineering Systems**. A **Data Science** major gives graduates a deep understanding of how to apply statistical and computing principles to working with big data. The other new major focuses on the **interactions between physical materials and processes, and human and non-human organisms**.

**See:** [www.bsc.unimelb.edu.au](http://www.bsc.unimelb.edu.au).

### INTERNATIONAL STUDENT CONSULTATIONS –

Year 12 students can book a consultation at **Melbourne** to discuss study options, applications and support services.

**When:** 2-5pm Tuesdays and Wednesdays; **Register:** [www.futurestudents.unimelb.edu.au/consultations-yr12](http://www.futurestudents.unimelb.edu.au/consultations-yr12)

**WHAT IF I DO NOT GET A HIGH ENOUGH ATAR TO GET INTO MY DESIRED COURSE?** Many pathways and programs exist to assist you in getting to where you want to go.

**Suggestions:**

- Complete a **Diploma of Tertiary Studies** at **Monash University** in either Education, Business or Nursing (ATAR 50+) **OR** a Diploma of Higher Education (ATAR 65+); Indigenous pathways - **See:** [www.study.monash/how-to-apply/indigenous-student-applications](http://www.study.monash/how-to-apply/indigenous-student-applications)
- Complete a course at **Monash College** in Art & Design, Arts (Human Behaviour or Psychology streams), Business or Commerce, Engineering or Science; search Courses on VTAC website
- Complete a course at **Deakin College** in Commerce, Computing, Engineering, Health Sciences, Management, Media and Communication or Science
- Complete a **UniLink Diploma** at **Swinburne** (Arts and Communications, Business, Design, Engineering, Health Science, IT, Science)
- Complete a **Diploma at La Trobe Melbourne** in Biosciences, Business, Engineering, Health Sciences, IT or Mass Media Communications
- Complete a **Tertiary Preparation Course** at **RMIT** in engineering or science
- Consider studying a **related university course** with a lower ATAR; **if you do well** you MAY be able to transfer to your desired course later on
- Start with a **VET (TAFE) course** in a related field; two years of VET often equals one at university

- Complete a **Tertiary Studies Diploma** at **Melbourne Polytechnic** (Preston)
- **Complete a Certificate IV in Liberal Arts** – a pathway into a range of degrees. **Swinburne and Victoria Uni** have this Certificate
- Consider a **country/rural campus**. ATAR's are often lower, usually due to lower demand; most have accommodation (apply ASAP)
- For **nursing** consider first completing **Division 2** at TAFE (or a private provider) - eg. Box Hill, Chisholm, Federation, Goulburn Ovens, Holmesglen, RMIT or Swinburne
- **ACU** has certificate/diploma courses that can lead to degrees (through ACUcom) **See:** [http://www.acu.edu.au/courses/2014/other\\_courses/vocational\\_education\\_training\\_vet/](http://www.acu.edu.au/courses/2014/other_courses/vocational_education_training_vet/)
- Complete a **Victoria University Foundations@VU** alternative entry to higher education and diploma studies course - a 13 week course designed to build academic skills needed for tertiary study. **See:** [www.vu.edu.au/courses/foundations-at-vu-jyac](http://www.vu.edu.au/courses/foundations-at-vu-jyac)
- Complete a 2-year **Associate Degree** – **Do you** want to study at university but are not sure if you will meet the entry requirements for a bachelor's degree? Several universities offer Associate Degrees (eg Deakin, RMIT).

**Penny Hysen - VET/VCAL/Careers**

## Applications for Camps, Sports & Excursions Fund (CSEF)

Parents who hold a valid Health Care Card are eligible to apply for CSEF. This grants each school-aged child an amount of money to be used during the year for any camp, sport or excursion. This money cannot be used for books, uniforms, fees, or any other expense. Funds will be held by the school and allocated towards any camp, sport, or excursion for which there is a fee payable.

Parents or legal guardians are required to complete a CSEF application form every year and lodge it with their child's school for processing. IF YOU DO NOT LODGE AN APPLICATION FORM YOU WILL NOT RECEIVE YOUR FUNDING.

Application forms should be completed and lodged with schools by 3 March 2017, as payments are made from March. However schools will be able to accept and process applications up until the end of term two each year. Please note that late applications cannot be processed under any circumstances. Application forms are included in this newsletter and can also be requested at the General Office.

### Shared custody

The CSEF system only allows one application per student. Parents in shared custody situations are encouraged to make decisions as to who applies for the CSEF. Schools should not be put into the position of arbitrating in decisions such as this.

If the parents cannot decide between themselves who should apply, they should be encouraged to resolve the dispute through the Family Court, or contact the Department's CSEF Helpdesk for more information on 1800 060 970.

**Parents & Friends presents.....**

# Macleod College Family Movie Night



**PAJAMA THEME**

DATE & TIME:	COST:	VENUE & FOOD:
<p>Friday, November 18th</p> <p>6pm arrival for 7pm (sharp) Movie start time</p>	<p>\$5 per Family (payable on the night) **Includes FREE popcorn (x1 only per family member)</p>	<p>Macleod College Theatre</p> <p>Sausage Sizzle \$2 Drinks \$1.50 (Available at 6pm)</p>

**SHOWING: ICE AGE 5 - COLLISION COURSE (rated G)**

**BYO:** Beanbags, Pillows, Blankets, Chairs, Snacks ..etc






# MUSIC ACADEMY NEWS

MACLEOD COLLEGE/ISSUE 6, NOVEMBER 2016



## STARS ALIGN FOR A GREAT CONCERT

Term 4 was a busy term for the academy, with the feature being our end of year theme concert. The students worked very hard to produce a concert dedicated to "Fallen Stars". This included tributes to musicians and actors that have passed away over recent years. It was run by the students, which took a lot of effort and time, but in the end provided fantastic results. The end of year concert is one of the most anticipated events of the year, with the concert featuring all aspects of the academy, including the Symphony Orchestra, Street Band Chamber Strings, vocalists and appearances from our two award winning groups: Big Band and Mega Mouth. The dedication of the music students was amazing to see and in the end, the big reveal went off without a hitch across two nights. This unfortunately was our last concert with this group of year 12's. They all worked so hard on this concert and all events throughout the year. Without them, we could not have achieved such a successful show. We are sad to see them go, but we wish them the best of luck in the future and thank them for their commitment to the music academy over the years!





### **VCE MUSIC EXAMS**

In this last term of their schooling, many year 12's have already completed their practical music performance exam. This includes either a solo or group performance of 25 minutes and goes towards their overall end of year score. It is a very daunting experience for the students and requires a lot of hard work. The students have been preparing all year for this, practicing in front of various audiences to try and get used to the nerves. For many of the students wishing to continue their music career outside of school, this is just a taste of whats to come with university and band auditions! We wish them all the very best in their exams and hope that they achieve their desired results.

### **LEADERSHIP TEAM**

With the current music leadership team leaving school, it is time to elect new leaders for the music academy. We thank Angela, Makaela, Rebecca and Xuen for all the hard work they put into the academy this year! It is not easy to balance VCE study with the demands of a leadership role, but they all did a fantastic job. The new music leadership team for 2017 sees Amy Graham and Dana D'Angelo as music captains and Daniel Yao and Jonathan Yeung as deputy music captains. We are sure they will have a fantastic reign as captains, as many before them, and wish them good luck for the 2017 year!



## FROM THE STUDENTS:

### Fallen Stars Concert:

The Fallen Stars concert took place on the 13th and 14th of October. The concert featured pieces from a range of well known performers including Prince, John Lennon and Amy Winehouse. Students enjoyed the lead up to the concert of learning new music, developing their skills and working together as a team. If it wasn't for our hard work and team effort, the concert wouldn't have been as successful as it was. We hope that the 2017 Music Academy will continue to achieve greatness.

- Amy Graham

### Final Assembly:

As a part of the concert, the year 11 music students organised a special tribute performance on the last night of the concert and the year 12 final assembly for the graduating year 12 students. This was to celebrate and acknowledge their hard work, commitment, and dedication to the Music Academy. Our 2017 Music Captain Amy delivered a fantastic speech that made everyone very emotional. We will truly miss all the year 12's leaving us this year, our music family will not be the same without you. We wish you all the best for the future.

- Jonathan Yeung



### Reservoir Neighbourhood house:

On Friday 21st of October, the MCMA saxophone quartet had their first ever performance at the Reservoir Neighbourhood house. From 6 o'clock to 8 o'clock, the quartet played a range of music from classical and jazz styles. Even though we were playing low ambient background music, we received positive feedback from the guest at the neighbourhood house and we would be honoured to be able to play there again next year.

- Dana D'Angelo

**Macleod College Music Academy**

**Carpwarp St, Macleod. Ph 9457 0222**

**Music Director:** Mr Jason Ziino [zzi@macleod.vic.edu.au](mailto:zzi@macleod.vic.edu.au)

**Music Captains:** Dana D'Angelo and Amy Graham



## MUSIC- COUNT US IN

The primary students at Macleod are involved in the Count us in initiative program. This involves them singing and playing a song with the event live streamed from Canberra Parliament House from 12pm. Schools from all across Australia have chosen to participate and will be singing the same song at the same time! The song this year is called "Let it play" and the song was created by 4 students from around Australia who worked with Program Ambassador John Foreman OAM and Program Mentor Jay Laga'aia. A great time was had by all in the performance and what was most encouraging was the increase in students participating in the



## TWILIGHT CONCERT

The Macleod College Twilight Concert will be held on Friday the 2nd of December at 7.30pm. This concert will be our final major showcase for 2016 featuring all the fantastic junior and middle years performers and ensembles that make up our vibrant academy. This year will be a relaxed outdoor performance in the ANZAC garden next to the theatre. Bring a picnic dinner or visit the Macleod Traders Christmas Fair beforehand. There will also be some snacks and a licensed bar available at the concert. This year, the concert will again tie in with our Mango Madness fundraiser and all those who have ordered mangoes will be able to collect them on the night.

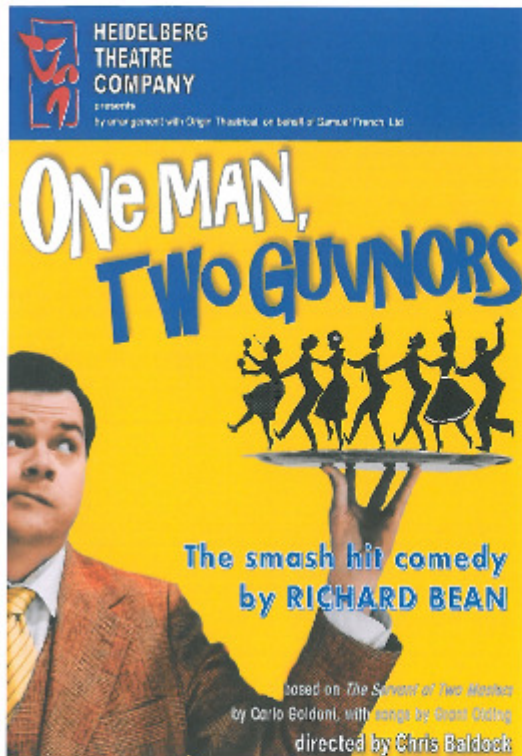


Heidelberg Theatre Company Present:

## ONE MAN, TWO GUVNORS

Thursday 17<sup>th</sup> November at 8pm  
36 Turnham Ave, Rosanna.

\$25 Adults  
\$20 Concession  
Supper included



### About the play

One easily-confused and ever-ravenous Francis Henshall finds himself a minder of two men, a gangster and a criminal in hiding, both of whom are linked in a web of schemes, extortions and romantic associations. To prevent discovery Francis must keep his two guvnors apart at all costs. But it's tricky. Mistaken identities, cross dressing and multiple mishaps soon coalesce to engulf him in pandemonium.

This internationally-acclaimed smash hit is a glorious celebration of British comedy. It has a wonderful mix of satire, slapstick and witty one liners.

Tickets available from Macleod College Office (9459 0222) or  
Cathie Clarke (0411 883 904)

This is a fundraiser for Macleod College Chaplaincy and Wellbeing Program

### Year 7 –12 Second Hand Book Sale

The Second-Hand book sale will be on again this year. It will follow the same format as last year, with collection of books to sell for a week or two before 2 sale days, with no pre-ordering of books to buy.

The two main Sale Days will take place in room B9 and will be on:

**Friday December 2<sup>nd</sup> from 3 to 5pm,**  
**Saturday December 3<sup>rd</sup> from 10am to 2pm**

We will also be selling on the two Year 7 Orientation days: **Tuesday December 6<sup>th</sup> and Wednesday December 7<sup>th</sup> from 8 – 10am and 2.30 – 4pm.**

A note with all the details will come home with your child along with the booklist for next year. Year 10 - 12 students can drop off their books to sell outside Mr Panaccio's office or the General Office, after their exams.

The book sale is a great service to the school community and is also a good fundraiser. Please support it, if you can, by buying and selling your books through the school and also by volunteering some time to make sure the book sale runs smoothly.

We need helpers to check and code all the books as they are dropped off by the students (from Monday 28<sup>th</sup> November til Friday 2<sup>nd</sup> December) and also, of course, to sell the books on the sale days.

**Helpers will get first pick of books for sale!** Please let me know if you are able to help anytime during that week –we really need you.

**Cathie Clarke - Ph: 9459 2278**

### Chaplaincy & Wellbeing Support Group

The **Trivia Night** on Friday 28<sup>th</sup> October was a great success with the VERB youth group of Banyule Uniting Church doing a terrific job in helping to run the night – thank you very much! There were 7 very competitive tables of around 8 people each. There was a Silent Auction of donated items, a raffle and also some handmade jewellery and wood-work on display for sale. Thank you very much to Dawn Hird, Geoff Spink, Marg Nigro and Joan Cave for their talented handiwork and their generosity. Thank you to Julie Devine for the chocolates and lollies for the winners of the Trivia. Thanks also to Jenny the hairdresser at the College who donated two blow-wave vouchers for the raffle, and Ace Airport parking for their \$100 parking voucher. We made a total profit of \$1254 – a great effort!

The **Sausage Sizzle at Masters Northland** last Saturday was a very busy day with around 600 sausages being sold. Thank you to our 12 helpers, especially to the middle of the day crew who were run off their feet! We made a profit of over a thousand dollars. Thanks goes to Greensborough Coles who gave us a \$50 voucher for sausages. Once again Ethan Billman stayed the whole day – thank you so much!

The **Seed Creations** order forms have been given out to all students in Yrs Prep to 9 (and there is an order form in this newsletter). Orders and money are **due by Friday Nov 18<sup>th</sup>** to the Office. They will be delivered in the first week of December.

We still have a few tickets left for the **Heidelberg Theatre Company** play, 'One man, Two Guvnors', on **Thursday 17<sup>th</sup> November at 8pm. Tickets are \$25 for Adults and \$20 concession** and are available from the Office. This is quite a well-known British play and is very funny. Get in quick to get your ticket!

We have done a lot of fundraising this year! Thanks to everyone for your support to enable Ann-Marie's position as Chaplain at the school as part of the Wellbeing team.

**Cathie Clarke - 9459 2278**





Perfect gift for Mum

**Seed creations**  
A fun way to grow

## FUNDRAISING GARDEN PRODUCTS

Buy a garden cube or pot and earn huge profits for your school or organisation!

### GARDEN GEM CUBES

Mum will love the little garden pot that includes everything to grow her own flowers.

**\$5**  
each cube

**9566 Garden Gem Flower Gift Pot**  
Specially selected for their dainty flowers, delicate beauty and fragrance. Includes varieties such as alyssum, statice, baby blue eyes, candytuft, carnation, chamomile, forget me nots, lavender, lily of the valley, sweet pea and more.

### GROW HAIR CUBES

#### CAT Grow Hair Cubes

3 each of 4 kinds  
= total 12 cubes per display

**\$5**  
each cube

Choose the perfect kitten or collect all four!

Each pot has their own personality from cheeky Marmalade to toadying Tuxedo. A fun holiday activity for all the family.

**9567 Marmalade** - Sodalite  
**9568 Smiley** - Lavender  
**9569 Tuxedo** - Pink  
**9570 Tuxedo** - Clover  
**9571 Cat Mixed Carry-Case** of 12 units

#### DOG Grow Hair Cubes

3 each of 4 kinds  
= total 12 cubes per display

**\$5**  
each cube

Choose your favourite puppy or collect all four!

They each have their own energy whether they are macho or just here to be pampered. A fun holiday activity for all the family.

**9572 French Bulldog** - Silverstone  
**9573 Schnauzer** - Indigo  
**9574 Poodle** - Gold  
**9575 Jack Russell** - Emerald  
**9576 Dog Mixed Carry-Case** of 12 units

### MINI GARDEN POT RANGE

There's nothing better than growing your own. Each pot includes everything you need to grow your own mini garden in a few easy steps.

**NEW**  
IN 4 POPULAR VARIETIES

**\$6**  
each pot

**9561 Basil**  
Mini Garden Pot  
Basil is a popular herb and very useful in a variety of dishes as a garnish, salad, soup, and more.

**9562 Lavender**  
Mini Garden Pot  
Basil is a popular herb and very useful in a variety of dishes as a garnish, salad, soup, and more.

**9563 Strawberry**  
Mini Garden Pot  
Strawberry is a popular fruit and very useful in a variety of dishes as a garnish, salad, soup, and more.

**9564 Tomato**  
Mini Garden Pot  
Tomato is a popular fruit and very useful in a variety of dishes as a garnish, salad, soup, and more.

**9565 Tomato**  
Mini Garden Pot  
Tomato is a popular fruit and very useful in a variety of dishes as a garnish, salad, soup, and more.

## 2016 GARDEN FUN IN EVERY POT!

NEW RANGE OF MINI GARDEN POTS

• Tomato, basil, lavender and strawberry. (There's something for everyone!)

POPULAR GARDEN GEM CUBES

• A fun and affordable gift for Mother's Day.

A RANGE OF GROW HAIR CUBES

• Cubes and every growing activity that is packed with fun.

✓ Great value - \$5 each grow hair cube, \$6 each mini garden pot.



Tel: 02 4571 6240 or 0410 540 266

Seed Creations Australia  
Website: 0800 881 911 | Email: fundraising@seedcreations.com.au  
www.seedcreations.com.au

**Seed creations**  
A fun way to grow

SCHOOL/GROUP \_\_\_\_\_  
SELLER'S NAME \_\_\_\_\_  
CLASS / ADDRESS \_\_\_\_\_

RETURN FORMS BY \_\_\_\_\_  
RETURN FORMS TO \_\_\_\_\_

Please return this order form with payment to your school or organisation's fundraising coordinator by the advised date.  
**Note:** Please make all cheques payable to your school or organisation.

Your purchase is supporting \_\_\_\_\_

Thank You!

#### MINI GARDEN POTS: \$6 EACH

Contains a cube and everything you need to grow your own mini garden. Dimensions: 60 x 60 x 50mm

#### GARDEN CUBES: \$5 EACH

Each cube has pot, soil and seeds to grow your own mini garden. Dimensions: 60 x 60 x 50mm

MINI GARDEN POTS: \$6 EACH				GARDEN CUBES: \$5 EACH																					
Contains a cube and everything you need to grow your own mini garden. Dimensions: 60 x 60 x 50mm				Each cube has pot, soil and seeds to grow your own mini garden. Dimensions: 60 x 60 x 50mm																					
9566 Garden Gem Flower Gift Pot	9567 Marmalade - Sodalite	9568 Smiley - Lavender	9569 Tuxedo - Pink	9570 Tuxedo - Clover	9571 Cat Mixed Carry-Case	9572 French Bulldog - Silverstone	9573 Schnauzer - Indigo	9574 Poodle - Gold	9575 Jack Russell - Emerald	9576 Dog Mixed Carry-Case	9577 Basil - Mini Garden Pot	9578 Lavender - Mini Garden Pot	9579 Strawberry - Mini Garden Pot	9580 Tomato - Mini Garden Pot	9581 Basil - Mini Garden Pot	9582 Lavender - Mini Garden Pot	9583 Strawberry - Mini Garden Pot	9584 Tomato - Mini Garden Pot	9585 Basil - Mini Garden Pot	9586 Lavender - Mini Garden Pot	9587 Strawberry - Mini Garden Pot	9588 Tomato - Mini Garden Pot	9589 Basil - Mini Garden Pot	9590 Lavender - Mini Garden Pot	
Qty	Qty	Qty	Qty	Qty	Qty	Qty	Qty	Qty	Qty	Qty	Qty	Qty	Qty	Qty	Qty	Qty	Qty	Qty	Qty	Qty	Qty	Qty	Qty	Qty	Qty
2	2	2	2	2	2	2	2	2	2	2	2	2	2	2	2	2	2	2	2	2	2	2	2	2	2
SUB TOTAL				SUB TOTAL																					
\$				\$																					
Name and phone number				Name and phone number																					
Mrs Lucy Sage 0410 325 000				Mrs Lucy Sage 0410 325 000																					
Please total all columns				Please total all columns																					



FOR BOOKINGS TYPE  
[www.asc.camp/school](http://www.asc.camp/school) INTO WEB BROWSER



AUSTRALIANSPORTSCAMPS.COM.AU

1300 914 368

## SUMMER SCHOOL HOLIDAY SPORTS CAMPS 2016/2017

### LEARN NEW SKILLS AND IMPROVE YOUR GAME! 3 DAY SPORTS CAMPS FOR 6 – 16 YEAR OLD BOYS AND GIRLS

- Our structured skill development programs run 9am – 3pm daily.
- Experienced coaching panel and guest stars attending.
- Meet your sporting idols, learn and be inspired by the best.
- Have fun playing and keeping active with your friends.
- Individual written coaches report reinforces learning.
- Video analysis and coach feedback sessions for fast improvement.
- Coach to participant ratio of 1 : 10 ensures individual attention.
- Careful group selection to maximize enjoyment and results.
- Autographed group photo and certificate of achievement.
- RRP - \$295 for three full days coaching.

DISCOUNTS  
AVAILABLE FOR:  
• FAMILIES - 20%  
• GROUPS & PAST PARTICIPANTS  
• EARLY BIRD'S - 30%  
BE QUICK!

### OUR UNCOMPROMISING COMMITMENT

- Providing a safe and fun environment at all times.
- Professional management and coaching.
- Structured breaks for proper rest and rehydration.
- Total customer care and support; we're always there to help.

For more details regarding our camps and coaching panels, please  
visit our website [www.asc.camp/school](http://www.asc.camp/school) or call 1300 914 368  
or email [admin@australiansportscamps.com.au](mailto:admin@australiansportscamps.com.au)

## Melbourne, VICTORIA

### BASKETBALL

20, 21 & 22 December

Scotch College,  
Hawthorn

16, 17 & 18 January

Brighton Grammar,  
Brighton

23, 24 & 25 January

Auburn High School,  
Hawthorn East

### CRICKET

20, 21 & 22 December

Scotch College,  
Hawthorn

16, 17 & 18 January

Wattie Watson Oval,  
Elwood

23, 24 & 25 January

Trinity Grammar Sporting  
Complex, Bulleen

### HOCKEY

21, 22 & 23 December

Hawthorn Hockey Centre,  
Hawthorn

### NETBALL

21, 22 & 23 December

Boroondara Sports Complex,  
North Balwyn

16, 17 & 18 January

Sandringham Youth Club,  
Hampton

23, 24 & 25 January

Methodist Ladies' College, Kew

### SOCCER

21, 22 & 23 December

H.A Smith Reserve, Hawthorn

16, 17 & 18 January

Sandringham Youth Club,  
Hampton

23, 24 & 25 January

Trinity Grammar Sporting  
Complex, Bulleen

### TENNIS

20, 21 & 22 December

Scotch College, Hawthorn

23, 24 & 25 January

Trinity Grammar Sporting  
Complex, Bulleen

For more information contact ASC on 1300 914 368 email  
[admin@australiansportscamps.com.au](mailto:admin@australiansportscamps.com.au) or book online  
now by typing [asc.camp/school](http://asc.camp/school) into your web browser.

### HISTORY AND RESULTS SPEAK

For 34 years it's been our privilege to coach over 150,000 happy  
kids, because at ASC we live by the motto that "Life's better with  
sport". We've dedicated ourselves to providing the best possible  
sports coaching for boys and girls of all standards, Australia-wide.

*EACH CHILD RECEIVES A COMPLIMENTARY GROUP PHOTOGRAPH,  
COACHES REPORT AND CERTIFICATE OF ACHIEVEMENT.*



Like us on Facebook at [facebook.com/AustralianSportsCamps](https://facebook.com/AustralianSportsCamps) and  
follow us @AustSportsCamps on Twitter, Instagram and Pinterest  
to keep up to date with the latest news, promos and camp photos.



### Make Christmas special for disadvantaged children in Banyule

#### Donate at

- Banyule Council's Service Centres
- Banyule Community Health, 21 Alamein Road Heidelberg West
- Shop 48, The Harmony Centre, Bell St Mall
- Ivanhoe Aquatic, Waterdale Road, Ivanhoe
- WaterMarc, 1 Flintoff Street, Greensborough

We welcome  
vouchers and unwrapped gifts  
of new toys for children  
aged from birth to 16.  
Please no soft toys or preloved items.





**MACLEOD COLLEGE  
MUSIC ACADEMY  
PRESENTS**



## **THE MANGO MADNESS**



## **TWILIGHT CONCERT & FAMILY PICNIC NIGHT**

**2nd DECEMBER, 2016**

**In the Macleod College ANZAC Garden**

**Weather permitting**

**Entry from May Street**

**PICNIC FROM 6 pm**

**BYO chairs & blanket. BBQ. food & drinks will be available**

**CONCERT FROM 7.30 pm**

**TROPICAL DRESS**

**PMC TROPICANA BAR & SNACK STOP**

**licenced area with beer, wine, punch and soft drinks**

**(Strictly NO BYO alcohol)**

**Collect mango trays from the hall area from 6pm**

Sustainable Macleod & the

**Macleod Organic  
Community Garden**



**This week in the garden**

**Tomato plants for sale**  
**Grosse Lisse, Dwarf Roma, Apollo**  
**and 20 heirloom varieties**  
**All \$1 ea**

Come and get some seedlings and explore the garden during our working bees. Visitors welcome!

Produce from the garden is distributed to members at the end of our working bees, so join up and come help out!

### **Upcoming Dates**

The next **Veggie Swap** is Sat 19 November, 11-12pm  
Bring your home grown items to swap or volunteer your time to help out. All welcome

### **Don't forget**

The **Macleod Organic Community Garden** is open every  
Wednesday 1 – 3pm & 5.30 – 8pm  
Saturday 1 – 5pm  
Everyone welcome

For more information or to sign up email us or visit website  
[sustainablemacleod@gmail.com](mailto:sustainablemacleod@gmail.com) [www.mocg.club](http://www.mocg.club)

## CAMPS, SPORTS AND EXCURSIONS FUND (CSEF) APPLICATION FORM

School Name

School REF ID

### Parent/legal guardian details

Surname \_\_\_\_\_

First name \_\_\_\_\_

Address \_\_\_\_\_

Town/suburb \_\_\_\_\_ State \_\_\_\_\_ Postcode \_\_\_\_\_

Contact number \_\_\_\_\_

Centrelink pensioner concession **OR** Health care card number (CRN)

-    -    -  **OR**

☐ Foster parent\* **OR** ☐ Veterans affairs pensioner

\*Foster Parents must provide a copy of the temporary care order letter from the Department of Health and Human Services (DHHS).

### Student details

Child's surname	Child's first name	Student ID	Date of birth (dd/mm/yyyy)	Year level

I authorise the Department of Education and Training (DET) to use Centrelink Confirmation eServices to perform an enquiry of my Centrelink customer details and concession card status in order to enable the business to determine if I qualify for a concession, rebate or service. I also authorise the Australian Government Department of Human Services (DHS) to provide the results of that enquiry to DET.

I understand that:

- DHS will use information I have provided to DET to confirm my eligibility for the Camps, Sports and Excursions Fund and will disclose to DET personal information including my name, address, payment and concession card type and status.
- this consent, once signed, remains valid while my child is enrolled at a registered Victorian school unless I withdraw it by contacting the school.
- I can obtain proof of my circumstances/details from DHS and provide it to DET so that my eligibility for the Camps, Sports and Excursions Fund can be determined.
- if I withdraw my consent or do not alternatively provide proof of my circumstances/details, I may not be eligible for the Camps, Sports and Excursions Fund provided by DET.
- information regarding my eligibility for the Camps, Sports and Excursions Fund may be disclosed to the Victorian Department of Health and Human Services and /or State Schools Relief for the purpose of evaluating concession card services or confirming eligibility for assistance.

You are able to request access to the personal information that we hold about you, and to request that any errors be corrected, by contacting your child's school.

Signature of applicant \_\_\_\_\_

Date \_\_\_\_ / \_\_\_\_ / \_\_\_\_



## CSEF ELIGIBILITY

Below is the criteria used to determine a student's eligibility for the Camps, Sports and Excursions Fund (CSEF).

### Criteria 1 – Eligibility

To be eligible\* for the fund, a parent or legal guardian of a student attending a registered Government or non-government Victorian primary or secondary school must:

- on the first day of Term one, or;
- on the first day of Term two;
  - a) Be an eligible beneficiary within the meaning of the *State Concessions Act 2004*, that is, be a holder of Veterans Affairs Gold Card or be an eligible Centrelink Health Care Card (HCC) or Pensioner Concession Card (PCC) holder, OR
  - b) Be a temporary foster parent, and;
  - c) Submit an application to the school by the due date.

\* A special consideration eligibility category also exists. For more information, see: [www.education.vic.gov.au/csef](http://www.education.vic.gov.au/csef)

Parents who receive a Carer Allowance on behalf of a child, or any other benefit or allowance not income tested by Centrelink, are not eligible for the CSEF unless they also comply with one of (a) or (b) above.

### Criteria 2 - Be of school age and attend school in Victoria

School is compulsory for all Victorian children aged between six and 17 years of age inclusive.

For the purposes of CSEF, students may be eligible for assistance if they attend a Victorian registered primary or secondary school. Typically, these students are aged between five and 18 years inclusive.

CSEF is not payable to students attending pre-school, kindergarten, home schooled, or TAFE.

### Eligibility Date

For concession card holders CSEF eligibility will be subject to the parent/legal guardian's concession card being successfully validated with Centrelink on the first day of either term one (30 January 2017) or term two (18 April 2017).

## PAYMENT AMOUNTS

### CSEF payment amount

The CSEF is an annual payment to the school to be used towards camps, sports and/or excursion expenses for the benefit of the eligible student.

- Primary school student rate: \$125 per year.
- Secondary school student rate: \$225 per year.

The CSEF is paid directly to your child's school and will be allocated by the school towards camps, sports and/or excursion costs for your child. .

**For ungraded students**, the rate payable is determined by the student's date of birth. For more information, see: [www.education.vic.gov.au/csef](http://www.education.vic.gov.au/csef)

**Year 7 government school students** who are CSEF recipients are also eligible for a uniform voucher. Secondary schools are required to make applications on behalf of parents so please register your interest at the school.

## HOW TO COMPLETE THE APPLICATION FORM

### NOTE: ALL SECTIONS MUST BE COMPLETED BY PARENT/LEGAL GUARDIAN

1. Complete the PARENT/LEGAL GUARDIAN DETAILS section.  
Make sure that the Surname, First Name, and Customer Reference Number (CRN) details match those on your concession card. You will also need to provide your concession card to the school.  
If you are claiming as a Foster Parent or a Veteran Affairs Pensioner, you will need to provide a copy of documentation confirming your status as a temporary Foster Parent or provide your Veterans Affairs Pensioner Gold card to the school.
2. Complete the STUDENT/S DETAILS section for students at this school.
3. Sign and date the form and return it to the school office by **30 June, 2017** which is the closing date for applications.

CSEF payments cannot be claimed retrospectively for prior years.

Queries relating to CSEF eligibility and payments should be directed to the school.