



# Macleod P - 12 College

## Primary Bulletin 4<sup>th</sup> November, 2016

Assistant Principal P – 6: Georgina Convery,  
 Primary College Captains: Alexandra Saveski, Keelan Russell  
 MACLEOD COLLEGE CARWARP STREET MACLEOD 3085  
 TELEPHONE 9459 0222 FACSIMILE 9458 1878  
 macleod.co@edumail.vic.gov.au www.macleod.vic.edu.au

### November

Monday 7 <sup>th</sup>	9.30am	PaFM AGM and Meeting
Tuesday 8 <sup>th</sup>	5.30pm	Chaplaincy & Wellbeing Support Group Meeting
Thursday 10 <sup>th</sup>	9.10am	2017 Prep Transition
Friday 11 <sup>th</sup>		Prep - 3 Swimming
Tuesday 15 <sup>th</sup>		2017 Information Evening 6pm Prep - 6 - G Block 7pm Year 7 - IMPACT Centre
Wednesday 16 <sup>th</sup>	6.15pm	College Council
Friday 18 <sup>th</sup>		Prep - 3 Swimming
Tuesday 22 <sup>nd</sup>	7pm	Information Evening - 2018 Enrolments
Friday 25 <sup>th</sup>		Prep - 3 Swimming

### December

Friday 2 <sup>nd</sup>		Prep - 3 Swimming Mango Madness Twilight Concert
Monday 5 <sup>th</sup>		PUPIL FREE DAY - 2017 STAFF PLANNING DAY OSHC available - please book
Tues 6 <sup>th</sup> - Wed 7 <sup>th</sup>		Year 7, 2017 Orientation Days
Friday 9 <sup>th</sup>		Prep - 3 Swimming
Monday 12 <sup>th</sup>		Year 6 Celebration Evening
Tuesday 13 <sup>th</sup>	7.30pm	Awards Night & Year 12 Graduation
Wednesday 14 <sup>th</sup>	11am	Parent Helpers' Morning Tea
Thursday 15 <sup>th</sup>		Year 6 Excursion to Funfields
Tuesday 20 <sup>th</sup>	11am	End of Term 4, 2016

### 2017 DATES TO REMEMBER

Primary Book Pick up Day Monday 30<sup>th</sup> January 9.30am - 2pm  
 Year 1– 10 students begin 8.54am Wednesday 1<sup>st</sup> February  
 Year 11 - 12 students begin 10.00am Wednesday 1<sup>st</sup> February  
 Prep students begin on Thursday 2<sup>nd</sup> February  
 VCAL Students begin 8.54am Friday 3<sup>rd</sup> February

## Pupil of the Week Ending 28<sup>th</sup> October

Prep/1 COJ	1/2 HIL	3/4 BUT	3/4 CAM	5/6 PET/PAS	5/6 PIP/PAS
Dearra W	Rhys H-McG	Liam McK	Hamish S	Michele B	Jack M
Joshua K	Ermal X	Mathew E	Alistair S		

## Pupil of the Week Ending 4<sup>th</sup> November

Prep/1 COJ	1/2 HIL	3/4 BUT	3/4 CAM	5/6 PET/PAS	5/6 PIP/PAS
Liam W	Alisha B	Long D	Sarah S	Marisa T	Jin H
Samiya A	Imaar A	Preeti T	Rui L		

## Assistant Principal's Report

### 2017 Leadership Inauguration

Congratulations to the 2017 student leaders who were inaugurated into their positions on Wednesday November 2<sup>nd</sup>.



<b>College Captains</b>	Rayanne Margi Jasmin Voykovic
<b>Primary College Captains</b>	Alexandra Saveski Keelan Russell
<b>International Captains</b>	William Chen Wesley Wang
<b>Deputy Captains</b>	Luke Giove Yanfei Yang
<b>Music Captains</b>	Dana D'Angelo Amy Graham
<b>Deputy Music Captains</b>	Daniel Yao Jonathan Yeung
<b>Shepherd House Captains</b>	Emma Reeves Sarah Reeves
<b>Leader</b>	Milos Popovic
<b>Carter House Captains</b>	Sheveytha Saravanan Ethan Billman
<b>Leader</b>	Sabrina Dal Maso
<b>Scarff House Captains</b>	Paige Voykovic Ashlee Longbottom
<b>Leader</b>	Charlotte Kilpatrick
<b>Ramsay House Captain</b>	Abdiraman Mohamed Declan Hall
<b>Leader</b>	Erica Favaloro
<b>SRC Representative</b>	Emily Ray

My thanks to the teachers and students for the way the leadership process was conducted. It was wonderful to see the number of students who were prepared to nominate for a position. It takes a lot of courage to put oneself forward for a leadership role and all are to be commended. Unfortunately, some may be disappointed to have missed out on a formal position but hopefully their enthusiasm and commitment to the progress of the school can be harnessed in many other ways.

Some photos from the Inauguration on Wednesday evening have been included in this issue.

### Watsonia RSL Scholarship

Congratulations to Khadija and Jade who are the recipients of the Watsonia RSL Scholarship this year. Well done to both girls! The teachers have said that they have consistently displayed exemplary attitudes throughout the year. They will receive their award at the Watsonia RSL Remembrance Day Ceremony next Friday.

### Working Bee

Thank you to all of the families and students who attended the working bee, 33 in all which is an amazing turnout. Your work around the Early Years area is much appreciated and is making a difference.

### Election Day BBQ

Thank you to also to those who assisted with the BBQ on Council Election Day. Conditions were very difficult with the weather but we all battled on.

### Trivia Night

Thank you to all those who attended the Trivia night last Friday. It was very well run by the VERB Group and Mike Clarke. Special thanks also to Cathie for her organisation.

### Masters BBQ

The Chaplaincy & Wellbeing Support Group have been very busy indeed and are also running the BBQ at Masters tomorrow November 5th.

Thank you to staff and parents who have volunteered to help. Come down and support us if you have a chance.

### Help Needed

The Early Years staff have put out an SOS for assistance with sorting out the reading room. Please contact Anne Hillman or Karen Butterworth if you can assist. I believe a lovely morning tea id on offer as a thank you.

### Parent Helpers' Morning Tea

An invitation has been included to a special morning tea for all of the wonderful parents/guardians who have been so instrumental in supporting us in 2016. Your support in so many areas: PaFM, working bees, College Council, excursions, classroom helpers and many other areas is evidence of the great team we have here at Macleod. So, please let us express our gratitude and appreciation by treating you to a "thank you" morning tea on Wednesday 14<sup>th</sup> December.

### Book Lists

Book lists for 2017 will be sent home next Monday. Yes, it is that time of year again. Please ensure that the booklist is returned to your child's teacher by December 1<sup>st</sup>.

### Friday Playgroup

Our Friday Playgroup had concluded for 2016. special thanks to Elissa, Leonie, Karen, Prue and Rae who have been fantastic in supporting this program. We have made some wonderful new friends this year. Thank you ladies for enabling us to provide this opportunity to families. Children coming along have enjoyed rich learning and socialising experiences. We hope to start again in 2017.

### Foundation Orientation

The final Orientation session for 2017 Foundation students is on Thursday. Please remind any friends or family members who may not have enrolled their school age child to please so do as quickly as possible.

### 2017 Destinations

A reminder to let myself/class teacher know in writing as soon as possible if your family are moving at the end of the year. This important information greatly assists us with staffing and class placements.

### Georgina Convery Assistant Principal

### Chaplaincy & Wellbeing Support Group

Our current Chaplaincy and Wellbeing Support Group fundraiser is NEW! **Seed Creations Australia** is a Sydney based company that promotes gardening for the whole family. Order forms and money will be due back by November 18<sup>th</sup> and orders will be delivered in the first week of December.

Many thanks for the brave and stalwart crew who helped out in very wintry conditions last Saturday on the Sausage Sizzle for the Council Election. We had a steady stream of customers and ended up raising \$760. Particular thanks go to Judy Edwards who was there for half the day, and to our ever helpful Year 9 student Ethan Billman, who was there for the entire time (in a t-shirt, but he said he wasn't cold!).

And we will be doing it all again on **November 5<sup>th</sup> at Masters Northland!** They are still trading (in fact they are quite busy!) and our long time booked Saturday has been confirmed. **If anyone is able to give any time to help with this BBQ we would be very grateful!** Please contact me on 9459 2278 or 0411 883 904. Thank you!

Our last fundraiser for the year (apart from the second hand book sale) is another **Heidelberg Theatre Company** night. We have only 20 tickets available for the play, **'One Man, Two Guvnors'** on **Thursday November 17<sup>th</sup> at 8pm. Tickets are \$25 for Adults and \$20 Concession** and available from the Office. This is quite a well-known British play and is very funny. Get in quick to get your ticket!

**Cathie Clarke**

### Parents & Friends of Macleod - PaFM

**\*\*WORKING BEE - A HUGE THANK YOU to all that helped at the recent working bee. A GREAT turn out considering the weather conditions that weekend!!** The poor weather meant we couldn't get any of the painting tasks done however, we did manage to get a lot of other jobs done including some general gardening, Fairy garden stage 1, planter boxes set up and positioned and laying of chip-bark just to name a few. The team morale and school community spirit certainly was high and continues to raise.

***Please note we will have a twilight after school working bee before the end of the year to get some more tasks completed including the painting tasks . Date to be advised.***

**\*\*ICY POLES are back!!** Every Thursday directly after school and also on the hotter days as they approach later in the term. \$1 per icy pole.

**\*\*P&F presents FAMILY MOVIE NIGHT - Friday 18<sup>th</sup> November.** Handouts with further Information will be given out in class next week.

**\*\*PLAYGROUP - *Is there anyone interested in volunteering to run the weekly playgroup?*** Fridays 1030am to 1130am.

We are looking for someone to run the playgroup on a weekly basis with the hope to have it running in particular for Term 1 2017 to assist in potential future prep enrolments. A great little program for someone with a passion for kids or a parent who would bring their child along anyway or perhaps a tertiary student looking at gaining experience?? Please leave your details with the general office if you are interested and we will be in touch for further discussion.

### **\*\*ANNUAL GENERAL MEETING (AGM)**

**THIS COMING MONDAY 7<sup>th</sup> NOVEMBER AT 9.30am** (and will be in conjunction with our next monthly meeting) **in the primary staff room behind Mrs Convery's office** ***New members are always welcome.***

The positions for next year need to be filled. So if you are interested in taking on an important part in your child's school than the Parents & Friends Committee is a great place to start! So please come along and find out more about the committee and each of the positions available. We would love some new members with fresh new ideas. Please note you can only vote if you are a financial member so please bring a gold coin to the AGM.

Coordinator – Position Available for 2017

Secretary – Position Available for 2017

Treasurer – Position Available for 2017

Fundraising Coordinator – Position Available for 2017

Communications Officer – Rae happy to continue this position for 2017

General Committee Members – several available

If you can't make the meetings but would like to have input please join us via Facebook: <https://www.facebook.com/groups/macleodpfc/>

**Rae Eshun**





**College Captains**



**Music Captains**



**Ramsay House**



**Shepherd House**



**Scarff House**



**Carter House**





**OUT OF SCHOOL HOURS CARE  
2017 PLANNING DAY - PUPIL FREE  
Monday 5<sup>th</sup> December, 2016**

**TIME: 7.00AM – 6.30PM**

**CHILDREN NEED TO BRING THEIR OWN LUNCH**

**BREAKFAST & AFTERNOON TEA**

**INCLUDING FRESH FRUIT WILL BE PROVIDED**

**FEE: \$40.00 PER CHILD**

**Julie 9457-0234 or 0401 – 991 -093**

**CHILD CARE BENEFIT (CCB) IS AVAILABLE TO ALL FAMILIES AS A FEE REDUCTION**

**BOOKINGS FOR THIS DAY ARE ESSENTIAL AND MUST BE MADE BY NO LATER THAN 25<sup>th</sup> NOVEMBER**

**PLEASE CALL OR EMAIL TO ADVISE WHETHER YOU NEED CARE FOR THIS DAY OR NOT.**

**Applications for Camps, Sports & Excursions Fund (CSEF)**

Parents who hold a valid Health Care Card are eligible to apply for CSEF. This grants each school-aged child an amount of money to be used during the year for any camp, sport or excursion. This money cannot be used for books, uniforms, fees, or any other expense. Funds will be held by the school and allocated towards any camp, sport, or excursion for which there is a fee payable.

Parents or legal guardians are required to complete a CSEF application form every year and lodge it with their child's school for processing. IF YOU DO NOT LODGE AN APPLICATION FORM YOU WILL NOT RECEIVE YOUR FUNDING.

Application forms should be completed and lodged with schools by 3 March 2017, as payments are made from March. However schools will be able to accept and process applications up until the end of term two each year. Please note that late applications cannot be processed under any circumstances.

Application forms are included in this newsletter and can also be requested at the General Office.

**Shared custody**

The CSEF system only allows one application per student. Parents in shared custody situations are encouraged to make decisions as to who applies for the CSEF. Schools should not be put into the position of arbitrating in decisions such as this.

If the parents cannot decide between themselves who should apply, they should be encouraged to resolve the dispute through the Family Court, or contact the Department's CSEF Helpdesk for more information on 1800 060 970.



## CAMPS, SPORTS AND EXCURSIONS FUND (CSEF) APPLICATION FORM

School Name

School REF ID

### Parent/legal guardian details

Surname

First name

Address

Town/suburb  State  Postcode

Contact number

Centrelink pensioner concession **OR** Health care card number (CRN)

-    -    -  **OR**

☐ Foster parent\* **OR** ☐ Veterans affairs pensioner

\*Foster Parents must provide a copy of the temporary care order letter from the Department of Health and Human Services (DHHS).

### Student details

Child's surname	Child's first name	Student ID	Date of birth (dd/mm/yyyy)	Year level

I authorise the Department of Education and Training (DET) to use Centrelink Confirmation eServices to perform an enquiry of my Centrelink customer details and concession card status in order to enable the business to determine if I qualify for a concession, rebate or service. I also authorise the Australian Government Department of Human Services (DHS) to provide the results of that enquiry to DET.

I understand that:

- DHS will use information I have provided to DET to confirm my eligibility for the Camps, Sports and Excursions Fund and will disclose to DET personal information including my name, address, payment and concession card type and status.
  - this consent, once signed, remains valid while my child is enrolled at a registered Victorian school unless I withdraw it by contacting the school.
  - I can obtain proof of my circumstances/details from DHS and provide it to DET so that my eligibility for the Camps, Sports and Excursions Fund can be determined.
  - if I withdraw my consent or do not alternatively provide proof of my circumstances/details, I may not be eligible for the Camps, Sports and Excursions Fund provided by DET.
  - information regarding my eligibility for the Camps, Sports and Excursions Fund may be disclosed to the Victorian Department of Health and Human Services and/or State Schools Relief for the purpose of evaluating concession card services or confirming eligibility for assistance.
- You are able to request access to the personal information that we hold about you, and to request that any errors be corrected, by contacting your child's school.

Signature of applicant

Date  /  /

## CSEF ELIGIBILITY

Below is the criteria used to determine a student's eligibility for the Camps, Sports and Excursions Fund (CSEF).

### Criteria 1 – Eligibility

To be eligible\* for the fund, a parent or legal guardian of a student attending a registered Government or non-government Victorian primary or secondary school must:

- on the first day of Term one, or;
- on the first day of Term two;
- a) Be an eligible beneficiary within the meaning of the *State Concessions Act 2004*, that is, be a holder of Veterans Affairs Gold Card or be an eligible Centrelink Health Care Card (HCC) or Pensioner Concession Card (PCC) holder, OR
- b) Be a temporary foster parent, and;
- c) Submit an application to the school by the due date.

\* A special consideration eligibility category also exists. For more information, see: [www.education.vic.gov.au/csef](http://www.education.vic.gov.au/csef)

Parents who receive a Carer Allowance on behalf of a child, or any other benefit or allowance not income tested by Centrelink, are not eligible for the CSEF unless they also comply with one of (a) or (b) above.

### Criteria 2 - Be of school age and attend school in Victoria

School is compulsory for all Victorian children aged between six and 17 years of age inclusive.

For the purposes of CSEF, students may be eligible for assistance if they attend a Victorian registered primary or secondary school. Typically, these students are aged between five and 18 years inclusive.

CSEF is not payable to students attending pre-school, kindergarten, home schooled, or TAFE.

### Eligibility Date

For concession card holders CSEF eligibility will be subject to the parent/legal guardian's concession card being successfully validated with Centrelink on the first day of either term one (30 January 2017) or term two (18 April 2017).

## PAYMENT AMOUNTS

### CSEF payment amount

The CSEF is an annual payment to the school to be used towards camps, sports and/or excursion expenses for the benefit of the eligible student.

- Primary school student rate: \$125 per year.
- Secondary school student rate: \$225 per year.

The CSEF is paid directly to your child's school and will be allocated by the school towards camps, sports and/or excursion costs for your child. .

For ungraded students, the rate payable is determined by the student's date of birth. For more information, see: [www.education.vic.gov.au/csef](http://www.education.vic.gov.au/csef)

Year 7 government school students who are CSEF recipients are also eligible for a uniform voucher. Secondary schools are required to make applications on behalf of parents so please register your interest at the school.

## HOW TO COMPLETE THE APPLICATION FORM

### NOTE: ALL SECTIONS MUST BE COMPLETED BY PARENT/LEGAL GUARDIAN

1. Complete the PARENT/LEGAL GUARDIAN DETAILS section.  
Make sure that the Surname, First Name, and Customer Reference Number (CRN) details match those on your concession card. You will also need to provide your concession card to the school.  
If you are claiming as a Foster Parent or a Veteran Affairs Pensioner, you will need to provide a copy of documentation confirming your status as a temporary Foster Parent or provide your Veterans Affairs Pensioner Gold card to the school.
2. Complete the STUDENT/S DETAILS section for students at this school.
3. Sign and date the form and return it to the school office by **30 June, 2017** which is the closing date for applications.

CSEF payments cannot be claimed retrospectively for prior years.

Queries relating to CSEF eligibility and payments should be directed to the school.

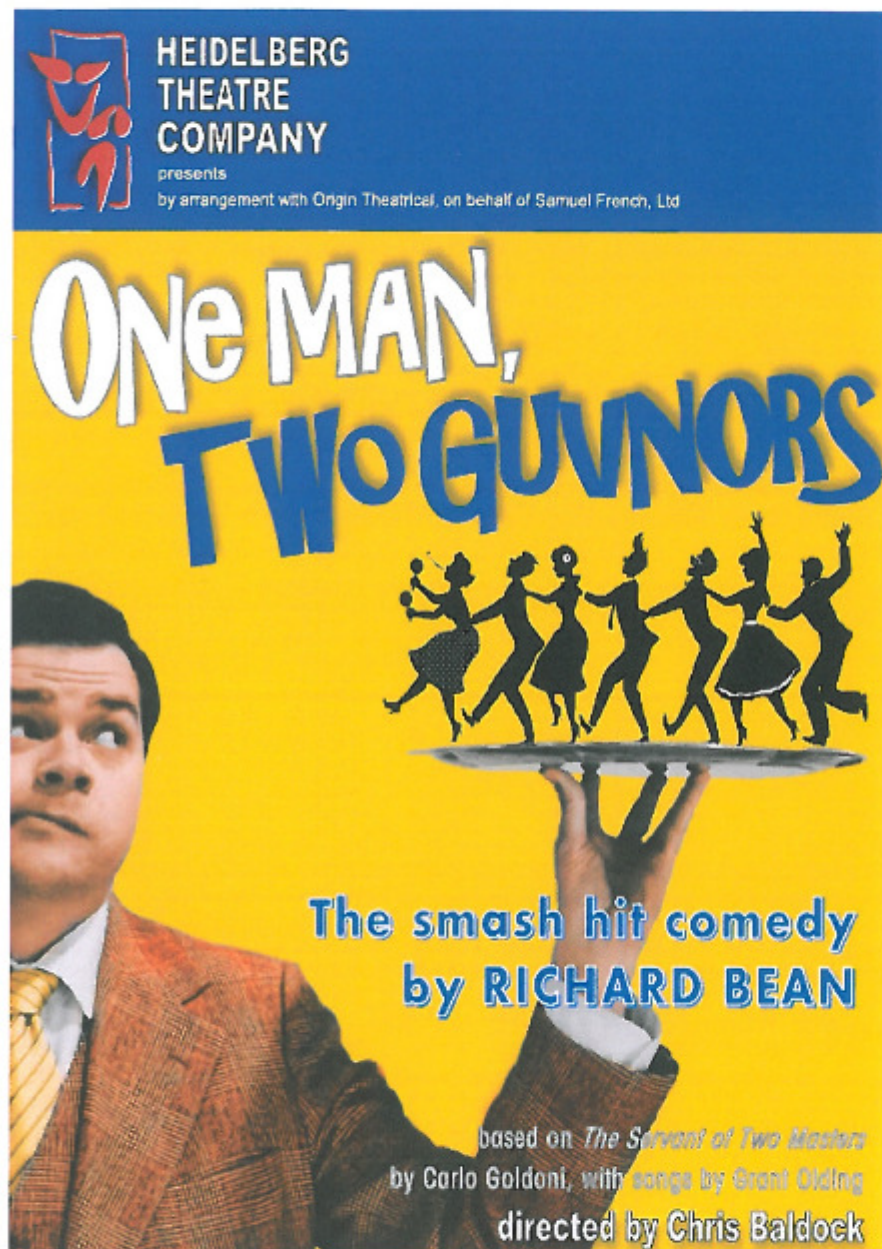


Heidelberg Theatre Company Present:

## ONE MAN, TWO GUVNORS

Thursday 17<sup>th</sup> November at 8pm  
36 Turnham Ave, Rosanna.

\$25 Adults  
\$20 Concession  
Supper included



### About the play

One easily-confused and ever-ravenous Francis Henshall finds himself a minder of two men, a gangster and a criminal in hiding, both of whom are linked in a web of schemes, extortions and romantic associations. To prevent discovery Francis must keep his two guvnors apart at all costs. But it's tricky. Mistaken identities, cross dressing and multiple mishaps soon coalesce to engulf him in pandemonium.

This internationally-acclaimed smash hit is a glorious celebration of British comedy. It has a wonderful mix of satire, slapstick and witty one liners.

**Tickets available from Macleod College Office (9459 0222) or  
Cathie Clarke (0411 883 904)**

This is a fundraiser for Macleod College Chaplaincy and Wellbeing Program





Perfect  
gift for  
Mum

Dimensions in mm: 6W x 1 x 10  
Each cube 60 x 60 x 50mm  
Each carry-carton 200 x 100 x 200mm

## GARDEN GEM CUBES

Mum will love the little garden pot that includes everything to grow her own flowers.

**\$5**  
each cube

### 9565 Garden Gem Flower Gift Pot

Specially selected for their dainty flowers, delicate beauty and fragrance. Includes varieties such as alyssums, asters, baby blue eyes, candytuft, carnation, chamomile, forget me nots, lavender, love in a mist, swan river daisy and violes.

## GROW HAIR CUBES

### CAT Grow Hair Cubes

3 each of 4 kinds  
= total 12 cubes per display

**\$5**  
each cube

Choose the purr-fect kitten or collect all four!

Each pet has their own personality from cheeky Marmalade to talkative Tuxedo. Adorable gift and stocking filler.

9607 Marmalade - Sociable

9608 Smokey - Lovable

9606 Tabby - Playful

9605 Tuxedo - Clever

9558 Cat Mixed Carry-Carton of 12 units



### DOG Grow Hair Cubes

3 each of 4 kinds  
= total 12 cubes per display

**\$5**  
each cube

Choose your favourite puppy or collect all four!

They each have their own energy whether they are mischievous or just love to be pampered. A fun holiday activity for all the family.

9612 French Bulldog - Affectionate

9613 Schnauzer - Inquisitive

9610 Poodle - Cute

9611 Jack Russell - Energetic

9559 Dog Mixed Carry-Carton of 12 units



## MINI GARDEN POT RANGE

There's nothing better than growing your own.

Each pot includes everything you need to grow your own mini garden in a few easy steps.

### 9561 Basil Mini Garden Pot

Basil is a wonderful herb and very versatile, a favourite in pasta and pizzas. FREE RECIPE INSIDE!



**NEW**  
IN 4 POPULAR  
VARIETIES

**\$6**  
each pot

### 9563 Lavender Mini Garden Pot

Beautifully scented deep blue flowers on compact plants. FREE ACTIVITY IDEA INSIDE!



### 9564 Strawberry Mini Garden Pot

Grows small and sweet little berries that taste delicious, especially when you have grown them yourself. FREE RECIPE INSIDE!



### 9562 Tomato Mini Garden Pot

Sweet, delicious bite sized fruit, perfect for salads, pasta or as pizza topping. A small grown variety that is perfect for pots. FREE RECIPE INSIDE!



Each mini garden contains a square ceramic pot, a soil pellet, a packet of seeds and growing instructions. Mini Garden Dimensions: (L x W x H) Each pot: 60 x 60 x 50mm. ONLY AVAILABLE AS INDIVIDUALS

## A BIG RANGE OF GROW HAIR CUBES

Ideal gift or stocking-filler. Great fun for young or old alike!

### AUSSIE Grow Hair Cubes

Your Australian themed grass head will grow a full mop of hair to trim and fashion!

9628 Crocodile

9629 Kangaroo

9630 Koala

9631 Wombat



### MAGIC KINGDOM Grow Hair Cubes

Four enchanting fairytale characters.

9643 Dragon

9644 Prince

9645 Princess

9646 Frog Prince



### FARM Grow Hair Cubes

Four popular farm animals to choose from.

9648 Chicken

9650 Pig

9651 Sheep

9652 Farm Animals Mixed

Display of 24 units

Only White Stocks Last. There are only a few farm animals left - be quick to order.



### AFRICAN Grow Hair Cubes

High jinks in the jungle with four animal favourites.

9653 Elephant

9654 Hippo

9655 Lion

9656 Monkey



Each grow hair cube contains a ceramic pot, a soil pellet, grass seeds and growing instructions. Dimensions: (L x W x H) Each cube: 60 x 60 x 50mm. Each mixed display: 180 x 200 x 100mm

Buy  
mixed displays  
or  
individuals

**\$5**  
each cube

# FUNDRAISING GARDEN PRODUCTS

Buy a garden cube or pot and earn huge profits for your school or organisation!

**8**  
PRODUCT  
RANGES  
TO CHOOSE  
FROM

## 2016 GARDEN FUN IN EVERY POT!

### NEW RANGE OF MINI GARDEN POTS

• Tomato, basil, lavender and strawberry, there's something for everyone!

### POPULAR GARDEN GEM CUBES

• An affordable and adorable gift for Mother's Day

### 6 RANGES OF GROW HAIR CUBES

• Quick and easy growing activity that is packed with fun

✓ Great value - \$5 each grow hair cube, Or \$6 each mini garden pot.



Seed Creations Australia

Tel: 02 4571 6240 or 0410 680 363 • Freefax: 1800 651 913 • Email: fundraising@seedcreations.com.au

www.seedcreations.com.au